



**ONE PEOPLE  
ONE COMMUNITY  
ONE COUNTRY**

**ONE WORLD  
OUR WORLD**

**ONE FIGHT  
ONE LIFE  
ONE PERSON**

**BE THE GENERATION**

**TO END SLAVERY AGAIN**

**JOIN THE MOVEMENT!**

# **2016 ANNUAL REPORT**



**SAFOUNDATION**

# TABLE OF CONTENTS

Executive Summary .....1

What is the SA Foundation .....2

Human Trafficking Affects Every Country in the World .....4

SA Foundation Global Wonders Initiative.....6

SA Foundation Core Services .....8

Recent SA Program Locations .....9

What is on the Horizon for Next Year.....10

2016 Audited Financial Statement.....12

How to Get Involved .....16

Donor Recognition .....17

# EXECUTIVE SUMMARY

Dear Friends & Supporters,

Thank you so much for taking the time to read through our 2015-2016 Annual Report. As you can tell, a lot of progress has happened in our international fight against sexual slavery during this fiscal year! We experienced exponential growth and what this means, on the ground, is that even more young women are now receiving the chance to escape their lives of degradation and abuse, and are given the opportunity to rebuild their lives for themselves and for their children.

What unfolded as these organizations began their work was that a network of escape for our survivors was formed! We always thought to ourselves that as the traffickers have a network that they move the women through, to be effective in the fight, we would need our own network. Today, we have programs in Europe in two source countries, one transit country and 3 cities in a destination country – our own network! To give you an idea of what this means, let us tell you about a scenario that just occurred:

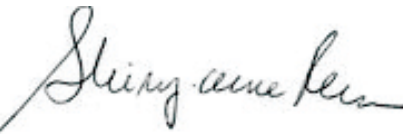
The program manager in Budapest received an urgent Facebook message from a young girl who was in Germany and was being held by a violent trafficker. She wanted out and she wanted to come back to Hungary. This manager immediately connected with our leadership in Berlin, who tracked down this girl. It turned out she was in the south part of Germany and closer to our program in Karlsruhe. The Karlsruhe team jumped into action, met up with this girl at a secret location, and were able to put her on the train to Budapest by the next day! The SAF leadership team rejoiced as another life was saved!

The network continues with several referrals from Germany back to Bulgaria and Budapest and as time goes by, more women will be repatriated back into their countries.

In the year to come we will continue to mentor this new leadership, along with the leadership of our previous project sites, so that they can one day join the SA Foundation in training up new project sites. In this way we will be able to multiply our effectiveness and reach exponentially!

We say this each year, but it remains true that we really could not have done this without you! Your support through the Monthly Donor Program, through attendance at our various fundraisers, and your gifts of funds from your personal and business accounts makes such a huge difference in this fight! We know that times have been tough in Canada this past year, and we have been so touched for your faithfulness and commitment in spite of shaky job situations. Know that we continue to pray for each of you and your businesses.

God bless,



Shirley Anne Reuben,  
President

# WHAT IS THE SA FOUNDATION?

The SA Foundation’s Pilot Program was born in 1989 in Calgary, Alberta and is a registered non-profit organization which is above all, a community where moms and their children find a safe place to heal together.

When our young women join our national and international programs, they are often pregnant with nowhere to go. Leaving behind a life of exploitation and addiction, they know there must be something more for their children but are not sure how to obtain it. Because we believe there is no greater bond than the one between mother and child, our goal is to keep families together. We do this primarily by opening safe living spaces for mothers and children in our projects - not only in Canada, but around the world.

## VISION STATEMENT

The SA Foundation is a Christian organization that delivers programs that are based on the principles of servanthood, personal recovery and community. Our long term objective is that no person be enslaved by, or trapped in the sex trade.

## MISSION STATEMENT

The SA Foundation seeks to accomplish its Vision by providing a way out for young women (and their children), that are able to escape the sex trade. The Foundation’s highly effective recovery program offers them a viable solution. Therefore planting these programs in conjunction with charitable groups is our top priority.

The SA Foundation subscribes to thinking globally and acting locally. Our Canadian and International Programs are initiated at the community level and driven by community involvement. The SA Foundation program model is practical and culturally transferrable.

## VALUES AND BELIEFS

The SA Foundation has 14 Core Values that drive its program and operational delivery. These values can be summed up in 3 key values that are enacted within the SA Foundation’s operating model.



SA FOUNDATION OPERATING MODEL CORE VALUES — KEY ELEMENTS

The SA Foundation disseminates the SA program model through its World Services Division located in Vancouver, BC – Canada that is set up as its Internship Centre.

## WHAT IS THE SA WORLD SERVICES DIVISION?

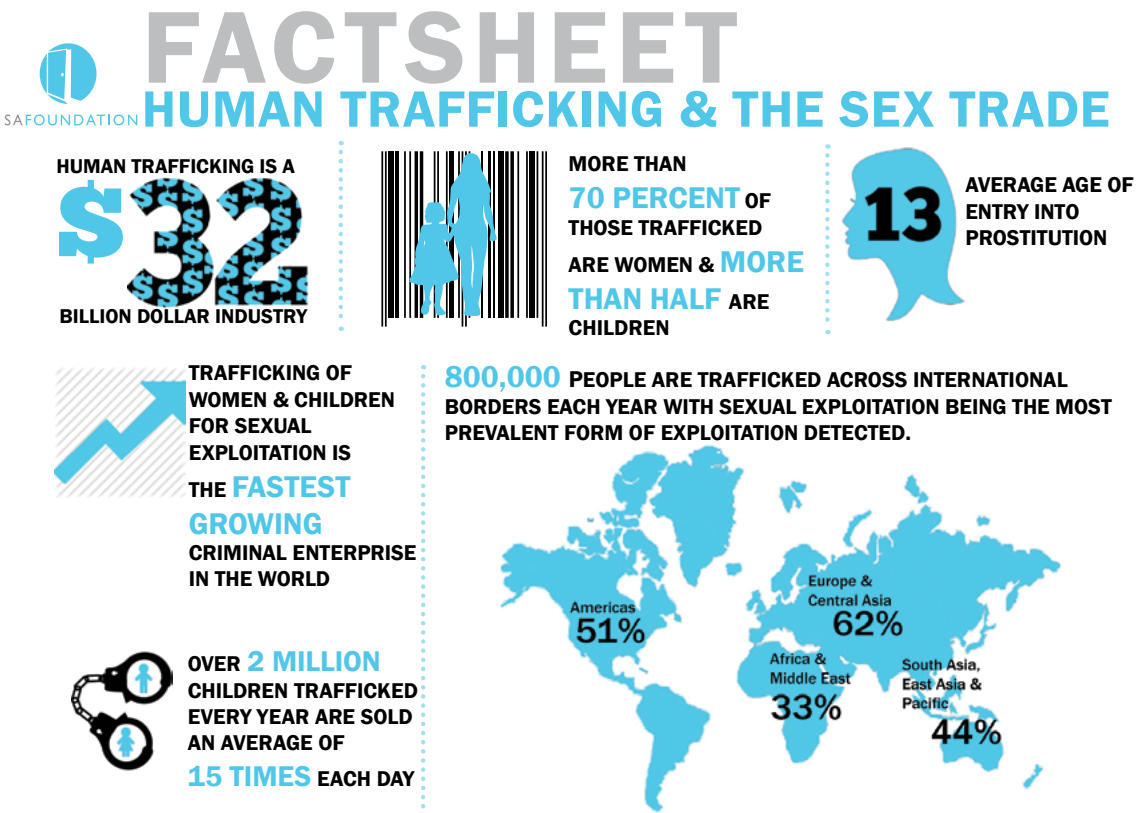
The SA World Services Division translates the objects of the SA Foundation into charitable activities that facilitate sexually exploited/trafficked children, youth and women’s inclusion into mainstream society wherever the SA program model is planted.

Today, many of God’s servants from Europe, Asia, Africa, the US and Canada come to the SA Foundation’s World Services Division to learn how to deliver - in their own city - our long-term program model of recovery to those who are able to escape their lives of slavery in the sex trade.

Our leaders at the SA Foundation and at each SA National and/or International Project share a common life purpose: to eradicate modern day slavery. Each day, they wage a fight on the sex trade industry, rescuing women and girls, with or without children, from sexual slavery.

## WHO LEADS THE SA FOUNDATION AND ITS WORLD SERVICES DIVISION?

- Shirley anne Reuben, President
- Jakki Poirier, Vice President
- Rohan Crown, Secretary/Treasurer
- Leita Ritch, Director
- Carla Dube, Directors of Programs, Executive Director
- Steve Laug, Director of Mentorship and Community Development
- Dominique Machefert, Director of Operations and International Business Development, CFO



Sources  
National Human Trafficking Resource Centre, 2011 | 2007 US State Department Report | United Nations Office on Drugs and Crime , Global Report on Trafficking of Persons 2012 | UNICEF, Children Out of Sight, Out of Mind, Out of Reach; Abused and Neglected, Millions of Children Have Become Virtually Invisible (Dec. 2005)  
<http://www.polarisproject.org/what-we-do/national-human-trafficking-hotline/the-nhtc/overview>



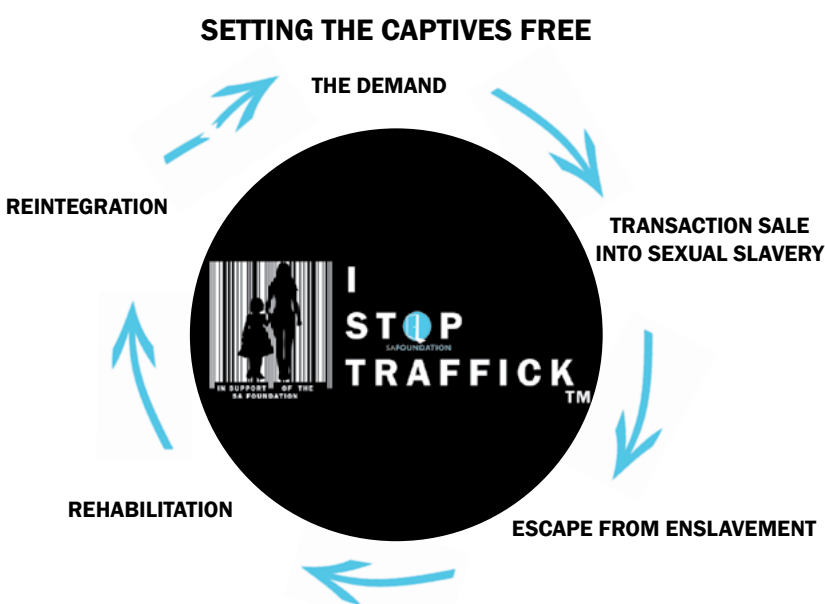
# HUMAN TRAFFICKING AFFECTS EVERY COUNTRY IN THE WORLD

Every country in the world is either a **source** country, a **transit** country or a **destination** country for human trafficking. UNODC data shows trafficking of human beings from 127 countries, to be exploited in 137 countries.

In simple terms, a **source** or origin country is a country where traffickers commonly find and recruit women and girls for their operations. Once traffickers have recruited an individual, that person is moved through intermediary or **transit** countries, sometimes for extended periods during which the women may be forced into the sex trade. Transit countries are chosen for their geographical location and are usually characterized by weak border controls, proximity to destination countries, corruption of immigration officials, or affiliation with organized crime groups that are involved in trafficking. In general, “organized criminals will try to push people over any border that is easiest for them to cross.” **Destination** countries are the last link in the human trafficking chain. These countries receive trafficking victims and are generally more economically prosperous than origin countries. **Destination** countries can support a large commercial sex industry, the modern equivalent of slavery. The financial return to traffickers per victim is also highest in richer countries.

## ESCAPE IS ALMOST IMPOSSIBLE

It is very hard, if not impossible, for a trafficked person to escape unless they are rescued. They are held as prisoners, often in isolated places, and are beaten or tortured for any disobedience or escape attempt. Trafficked persons are often trapped in a foreign country with no language skill, money or identification documents, and **no one who can help them if they do escape**. Due to corruption, there is suspicion of police. Traffickers often hold identification documents, so they know their victims’ former home addresses, and threaten violence against their families for any escape attempt. Often those who escape cannot return home because of the risk of being trafficked again or because they can identify traffickers. Also, their communities often reject them for cultural reasons if they have been used in the sex industry, even though it was not their choice.



**Victims are most commonly trafficked within their home country or region of origin. Roughly 34% of identified trafficking victims were trafficked domestically between 2010 and 2012, meaning they never left their country of origin.**

The Vancouver Internship Centre as well as all of our national and international SA partners provides long-term programs and services (3 to 7 years) to locally sexually exploited/trafficked women with or without children.

Rescuing a woman out of sexual slavery is just the first step.

Psychologists assess that women exiting sexual exploitation and trafficking have the same level of trauma as soldiers exiting front line battle. The SA program model is long-term (3 to 7 years) because it takes that long to overcome the barriers and heal the scars left by the sex trade.

The SA program model provides:

- Short and long term housing
- Trauma therapy
- Substance abuse recovery
- Life skills development
- Pre-employment training
- Academic upgrading
- Child care/parent support
- Re-integration services



As our young moms transition to a life of freedom and hope, they are also offered on-site childcare while they attend recovery day programming, parenting classes, and gain access to community services to complement their recovery.

**Over a period of 3 years, 70% of women accessing SA programs worldwide have successfully re-integrated into society.**



THE SA FOUNDATION’S VISION FOR LONG-TERM SUSTAINABILITY:  
A PROACTIVE INITIATIVE

In addition to the SA Foundation’s vision of implementing its recovery program models for sexually exploited/trafficked youth, women and their children in cities worldwide, the SA Foundation also has a long-term vision for financial self-sustainability.

To reach this vision, the SA Foundation has laid the groundwork for the implementation of **GLOBAL WONDERS** as its related business venture to facilitate the coexisting social and economic priorities of the Foundation.

Within the SA Foundation, sustainability is defined as establishing related social enterprises such as Global Wonders. Contrary to business models which seek to maximize profits for shareholders the SA Foundation’s Global Wonders is designed to maximize social benefits for sexually exploited/trafficked youth and women as they receive their on-the-job shadowing and training within this social enterprise. At the same time Global Wonders is also developed to provide the Foundation with the long-term financial sustainability needed to fulfill our charitable activities within our Nepali program.

In 2003, The SA Foundation started a Handicrafts project as part of its Nepali SA program selling a few hand woven bags to friends and family out of the back of a mini-van. Today Global Wonders trains and employs young women in both our Nepal & Vancouver programs and imports a minimum of 4,000 pieces of jewelry per year.



HOW GLOBAL WONDERS WORKS

Global Wonders Jewelry is handmade by women in the SA Foundation’s Nepal program. The production/distribution of our jewelry provides dignity and marketable skills for women involved in our programs. 100% of net revenue from the sale of our jewelry is reinvested back into the recovery programs & work of the SA Foundation.



Invest in Freedom — Be a Global Wonder

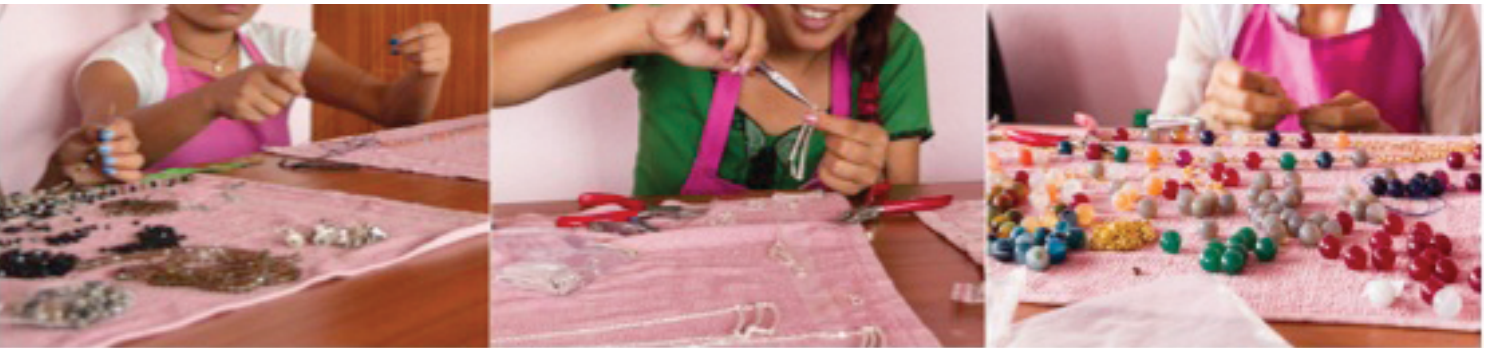
GLOBAL WONDERS

**Global Wonders** products are all one-of-a-kind handmade pieces made by the women in the SA Foundation’s Nepali program and have become a main vehicle for educating concerned individuals & groups about the realities of sex trafficking.

As part of the SA Foundation, our goal is to advocate for and inspire social change. We do this through engaging the public in all matters involving human trafficking and sexual exploitation.



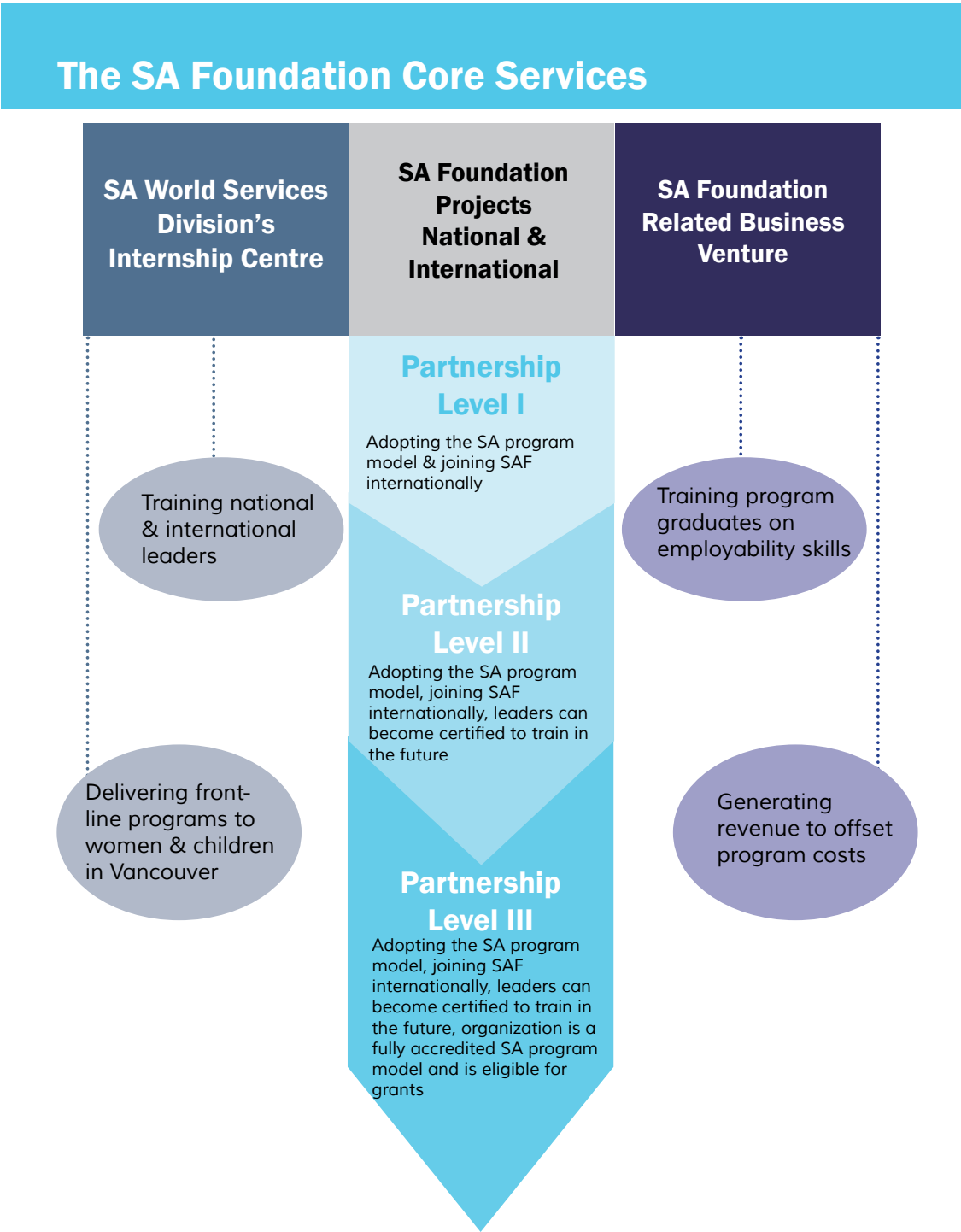
Through our work both domestic and abroad, we are able to provide girls with a fighting chance for freedom, hope and dignity. All of our jewelry samples are designed by local artists who share a passion for human rights and justice and sometimes by women involved in our Vancouver program.



*“I came to the program and started to learn various life changing skills. Initially it was hard for me to adjust but later on I adjusted to the new environment. By coming to the program, I have changed my thinking and I have become courageous to do something in my life. Now I have been taking advance tailoring skills, and after this training I am going to open a tailor shop in my own village. I thank the program for changing my life and making me a new person and for giving me a new identity.” — J, program participant*

Over the years, The SA Foundation’s World Services Division has been inundated with requests from Canada and all over the world to provide partnership opportunities to charitable groups that seek to deliver our SA Program Model in their own cities. Such requests motivated us to “go to scale” by expanding our intervention to reach larger populations, thus, not only increasing our local impact but also beginning the process for our long term objective to one day be fulfilled globally.

Partnership with the SA Foundation can take three different levels as shown in the chart below and the individual partnership levels are compared to show the difference. Each level increases the level of services offered to the partner organization by the SA Foundation, as well as the level of relationship and interaction.



# MOST RECENT SA PROGRAM LOCATIONS

Located in a Destination Country since 2015  
Level I Partnership  
In the process of developing the SA Program Model

STUTT GART

Located in a Destination Country since 2015  
Level I Partnership  
Started Day Program

KARLSRUHE

Located in a Destination Country since 2015  
Level II Partnership  
Started 1<sup>st</sup> house  
Started Day Program

BERLIN

Located in a Source Country since 2013  
Level III Partnership  
Started 1<sup>st</sup> house  
Started Day Program  
Supported by SAF \$7,500/mo

BUDAPEST

Located in a Source Country since 2015  
Level III Partnership  
Started 1<sup>st</sup> house  
Started Day Program  
Supported by SAF \$5,500/mo

SOFIA

Located in a Transit Country since 2015  
Level III Partnership  
Started 1<sup>st</sup> house  
Started Day Program  
Supported by SAF \$12,500/mo

ATHENS

Internship Centre since 2010  
Trains, Equips & Mentors  
1 House  
Recovery Day Program  
Parent Support Centre  
Followcare  
Supported by SAF \$24,000/mo

VANCOUVER

Located in Source Country since 2000  
Level III Partnership  
Prevention & Empowerment  
3 levels of housing  
Recovery Day Program I, II & III  
Parent Support Centre  
Followcare  
Supported by SAF \$11,500/mo  
Program produces Global Wonders products

KATHMANDU

The SA Foundation wants to thank God for the amazing network He has begun to create in Europe. All of the projects there in Berlin, Stuttgart, Karlsruhe, Budapest, Sofia and Athens are networking together for the sake of the women they serve, creating a route of escape for those running for their lives.



# WHAT IS ON THE HORIZON FOR NEXT YEAR?

The SA Foundation has been contacted by 2 more groups who would like to implement the SA Program Model in their cities and 3 more potential future groups.

## ATLANTA, GEORGIA (USA)

Human trafficking is brutal and widespread in Georgia . Atlanta is one of the largest hubs for human trafficking in the US. Georgia’s State Attorney General Samuel Olens calls human trafficking a brutal, complex and widespread crime. Olens says vulnerable people, often children, are sold and forced to have sex against their will. The team in Georgia will receive their leadership assessment when ready from the SA Foundation and training on the program model is scheduled afterward. The organization will have a Partnership Level II with the SA Foundation.

## DURHAM REGION (CANADA)

Durham Region is an outlying area of Toronto, Ontario. Trafficking into the sex trade is the most significant form of Human Trafficking in Durham Region. It is so significant that the Durham Regional Police have established a special Human Trafficking unit. The team will now participate in the SA Foundation’s leadership assessment process in September of this year, and will then return to Vancouver for training afterward. They will have a Partnership Level III with the SA Foundation.

## VICTORIA, BC (CANADA), BIMENDA (CAMEROON) AND A RESCUE MISSION IN INDIA THROUGH OUR NEPALI PROJECT

These potential developments are at different levels of inquiries at this present time and may see the SA Program Model implemented in 2018 in these different parts of the world.

## COST OF DISSEMINATION OF THE SA PROGRAM MODEL

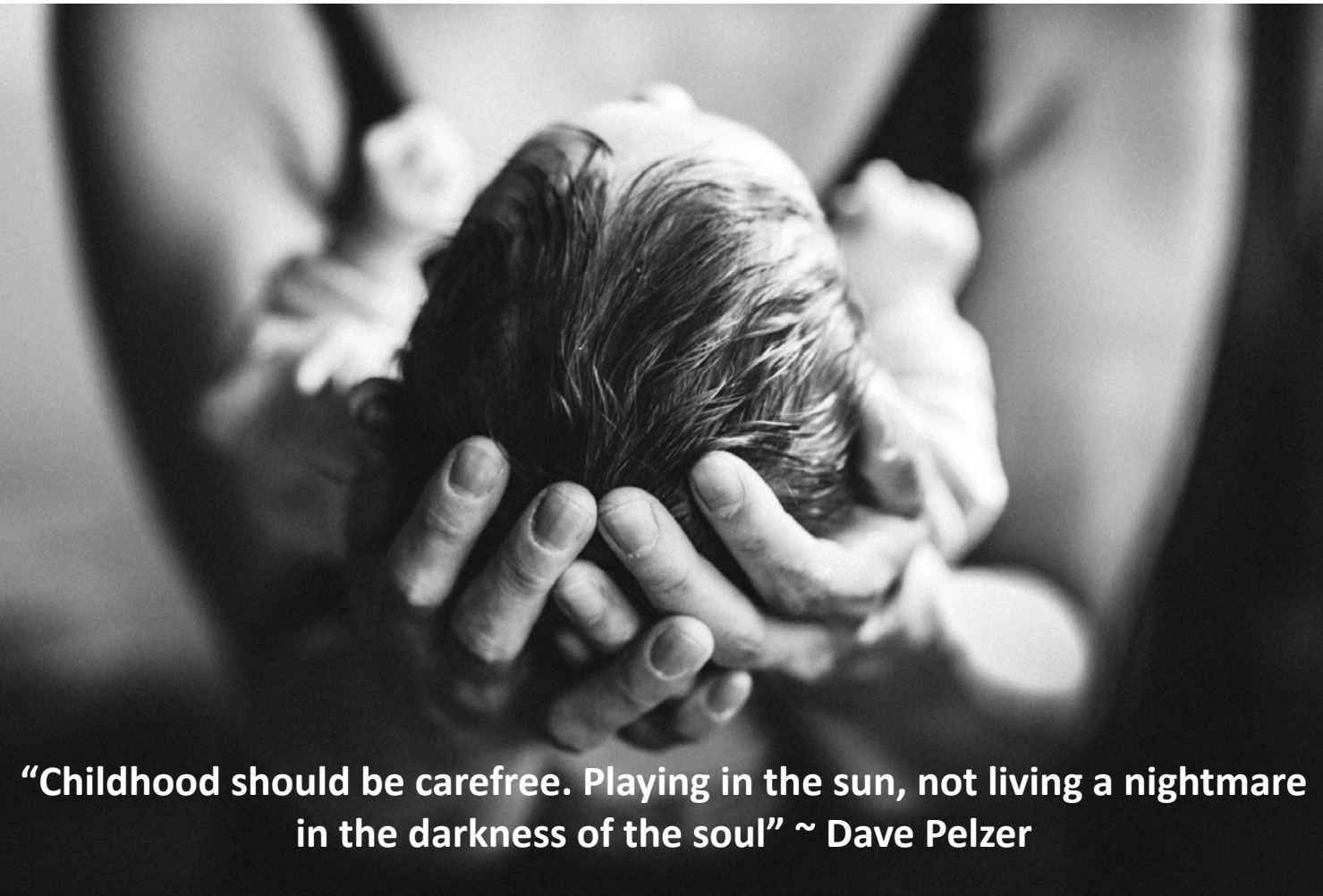
- Pre-Development, Leadership Assessment, curriculum, training and 1st year implementation: \$ 50,000.00 to \$ 75,000.00 (This phase of development total approximately 3 years)
- Mentoring and program evaluations each year hereafter: \$ 5,000.00 to \$ 10,000.00 (This phase of mentoring total approximately 5 years)

# LET US BE THE GENERATION THAT WILL END SLAVERY NO MATTER THE COST!

**William Wilberforce wrote in his diary in 1787 that his great purpose in life was to suppress the slave trade before waging a 20 year fight on the industry. But Wilberforce’s fight to free slaves is far from over.**

*Today, an estimated 27-36 million people live in slavery, more than any other time in history. 80% being trafficked are females; half of these are children.*

*Did you know that over 70% of the women we serve are mothers?*



**“Childhood should be carefree. Playing in the sun, not living a nightmare in the darkness of the soul” ~ Dave Pelzer**

**Moms and children living in the brothels of this world live a nightmare in the darkness of the soul each day of their lives.**

# AUDITED FINANCIAL STATEMENT ENDING MARCH 31 2016



SA FOUNDATION  
ANNUAL REPORT 2016

## THE S.A. (SERVANTS ANONYMOUS) FOUNDATION-CANADA

### STATEMENT OF FINANCIAL POSITION

MARCH 31, 2016

	2016	2015
<b>ASSETS</b>		
CURRENT		
Cash	\$ 55,235	\$ 83,048
Term deposits	363,462	670,000
Interest receivable	491	452
Prepaid expenses	35,491	35,491
	<u>454,679</u>	<u>788,991</u>
CAPITAL ASSETS (Note 3)	<u>8,065</u>	<u>10,495</u>
	<u>\$ 462,744</u>	<u>\$ 799,486</u>
<b>LIABILITIES</b>		
CURRENT		
Accounts payable and accrued liabilities	\$ 4,565	\$ 4,782
Government remittances payable	3,225	3,757
	<u>7,790</u>	<u>8,539</u>
NET ASSETS		
Invested in capital assets	8,065	10,495
Unrestricted	<u>446,889</u>	<u>780,452</u>
	<u>454,954</u>	<u>790,947</u>
	<u>\$ 462,744</u>	<u>\$ 799,486</u>

APPROVED ON BEHALF OF THE BOARD:

*[Signature]* Director  
*[Signature]* Director

## THE S.A. (SERVANTS ANONYMOUS) FOUNDATION-CANADA

### STATEMENT OF OPERATIONS AND CHANGES IN NET ASSETS

YEAR ENDED MARCH 31, 2016

	2016				2015
	GENERAL	INTERNSHIP PROGRAM	WORLD PROJECTS	TOTAL	TOTAL
<b>REVENUE</b>					
Donations	\$ 583,020	\$ 49,267	\$ 202,410	\$ 834,697	\$ 1,278,221
Investment	4,820	-	-	4,820	2,360
	<u>587,840</u>	<u>49,267</u>	<u>202,410</u>	<u>839,517</u>	<u>1,280,581</u>
<b>EXPENSES</b>					
Project costs	52,895	125,639	595,536	774,070	588,846
Remuneration and benefits	113,529	88,873	-	202,402	214,558
Occupancy	26,828	77,566	-	104,394	100,036
Fundraising	66,442	-	-	66,442	63,442
General and administration	25,772	-	-	25,772	23,063
Amortization	2,430	-	-	2,430	5,672
	<u>287,896</u>	<u>292,078</u>	<u>595,536</u>	<u>1,175,510</u>	<u>995,617</u>
Excess (Deficiency) of Revenue Over Expenses Before Undemoted	<u>299,944</u>	<u>(242,811)</u>	<u>(393,126)</u>	<u>( 335,993)</u>	<u>284,964</u>
Gain on disposition of capital assets				-	318,461
Excess (Deficiency) of Revenue Over Expenses				( 335,993)	603,425
Net Assets At Beginning of Year				<u>790,947</u>	<u>187,522</u>
<b>NET ASSETS AT END OF YEAR</b>				<u>\$ 454,954</u>	<u>\$ 790,947</u>

## THE S.A. (SERVANTS ANONYMOUS) FOUNDATION-CANADA

### STATEMENT OF WORLD PROJECT REVENUES AND EXPENSES

YEAR ENDED MARCH 31, 2016

	2016		2015
	INCOME	COSTS	NET COST
Germany	\$ -	\$ 41,706	\$ 41,706
Athens	8,000	78,732	70,732
Bulgaria	4,975	55,029	50,054
Gentle Heart Foundation	83,332	203,494	120,162
Hungary	19,960	115,747	95,787
Atlanta	-	1,591	1,591
Nepal - Kathmandu GW	<u>86,143</u>	<u>99,237</u>	<u>13,094</u>
	<u>\$ 202,410</u>	<u>\$ 595,536</u>	<u>\$ 393,126</u>
			<u>\$ 208,431</u>

## THE S.A. (SERVANTS ANONYMOUS) FOUNDATION-CANADA

### STATEMENT OF CASH FLOWS

YEAR ENDED MARCH 31, 2016

	2016	2015
<b>CASH FLOWS FROM OPERATING ACTIVITIES</b>		
Excess (deficiency) of revenue over expenses	\$ (335,993)	\$ 603,425
Adjustments for		
Loss on disposition of properties	-	(318,461)
Amortization	2,430	5,672
	<u>(333,563)</u>	<u>290,636</u>
Changes in non-cash operating working capital		
Interest receivable	( 39)	( 452)
Prepaid expenses	-	2,500
Accounts payable and accrued liabilities	( 217)	507
Government remittances payable	( 532)	2,595
	<u>( 788)</u>	<u>5,150</u>
	<u>(334,351)</u>	<u>295,786</u>
<b>CASH FLOWS FROM INVESTING ACTIVITIES</b>		
Disposition of properties	-	500,000
<b>CASH FLOWS FROM FINANCING ACTIVITIES</b>		
Bank operating loan repaid	-	(150,000)
<b>INCREASE (DECREASE) IN CASH</b>	<u>(334,351)</u>	<u>645,786</u>
Cash At Beginning Of Year	<u>753,048</u>	<u>107,262</u>
<b>CASH AT END OF YEAR</b>	<u>\$ 418,697</u>	<u>\$ 753,048</u>
Cash is defined as cash and term deposits		
Cash	\$ 55,235	\$ 83,048
Term deposits	<u>363,462</u>	<u>670,000</u>
	<u>\$ 418,697</u>	<u>\$ 753,048</u>



1. PURPOSE OF THE FOUNDATION

DEFINITIONS

"*The S.A. Foundation*" means The S.A. Foundation (Servants Anonymous) – Canada.

This "*Population*" means children, women and youth with or without children who are either sexually exploited/trafficked or who are at high risk of becoming victims of sexual exploitation/trafficking.

"*The SA World Services (SAWS)*" means an integral part of the SA Foundation's organizational structure created to facilitate the delivery of its programs and services, training, production and retailing charitable activities.

OBJECTS OF THE SA FOUNDATION

- a) To ethically raise funds in any way to fulfil the SA Foundation's objects and charitable activities and to use the SA Foundation's funds according to and in pursuit of its objects and charitable activities.
- b) To directly assist this "*population*" in their re-integration into society.
- c) To assist this "*population*" in their re-integration into society by co-operating with local organizations abroad.
- d) To assist this "*population*" in their re-integration into society by gifting organizations that are "qualified donees" as defined in subsection 149.1(1) of the Income Tax Act and that deliver programs and services to this "*population*".
- e) To provide qualified donees in Canada or through co-operating with local organizations abroad, with the needed assistance and training to give them the expertise to deliver necessary programs and services to this "*population*".
- f) To produce and retail through related business activities as defined under the Income Tax Act, SA religious publications, educational and marketing materials and items such as handicrafts as a means to achieve the SA Foundation's charitable programs.

2. SIGNIFICANT ACCOUNTING POLICIES (Continued)

FOREIGN CURRENCY TRANSLATION

Foreign currency denominated monetary assets and liabilities are translated into Canadian dollars at the exchange rate in effect as of the date of the balance sheet. Foreign currency denominated non-monetary assets and liabilities are translated into Canadian dollars at the exchange rate in effect on the transaction date. Revenue and expense items are translated at the average exchange rates for the period. Gains or losses in translation have been charged to income of the current period.

USE OF ESTIMATES

The preparation of financial statements requires management to make estimates and assumptions that affect the reporting amounts of assets and liabilities at the date of the financial statements and the reporting amounts of revenues and expenses during the period. Actual amounts could differ from those estimates.

ONGOING OPERATIONS

The ongoing operations of the Foundation are dependent on the continued financial support of it's donors.

2. SIGNIFICANT ACCOUNTING POLICIES

These financial statements have been prepared in accordance with Canadian accounting standards for not-for-profit organizations in Part III of the CICA Handbook, using the assumption that the Foundation will continue as a going concern. Significant accounting policies are described below.

REVENUE RECOGNITION

The Foundation follows the deferral method of accounting for donations and memberships. Restricted amounts are recognized as revenue in the year in which the related expenses are incurred. Unrestricted amounts are recognized as revenue when received or receivable if the amount to be received can be reasonably estimated and collection is reasonably assured.

Interest income isare recognized when earned.

INCOME TAXES

The Foundation is a not for profit Foundation under the Income Tax Act and, therefore, is not subject to either Federal or Provincial income taxes.

CAPITAL ASSETS

Capital assets are recorded at cost. Amortization is provided at the following annual rates:

Furniture and fixtures	20%	Declining balance
Computer equipment	30%	Declining balance
Video	20%	Declining balance
Automotive	30%	Declining balance

3. CAPITAL ASSETS

	2016		2015	
	Cost	Accumulated Amortization	Net Book Value	Net Book Value
Furniture and fixtures	\$ 49,174	\$ 43,665	\$ 5,509	\$ 6,885
Computer equipment	20,863	20,175	688	983
Video	11,180	10,944	236	295
Automotive	8,000	6,368	1,632	2,332
	<u>89,217</u>	<u>81,152</u>	<u>8,065</u>	<u>10,495</u>

4. FINANCIAL INSTRUMENTS

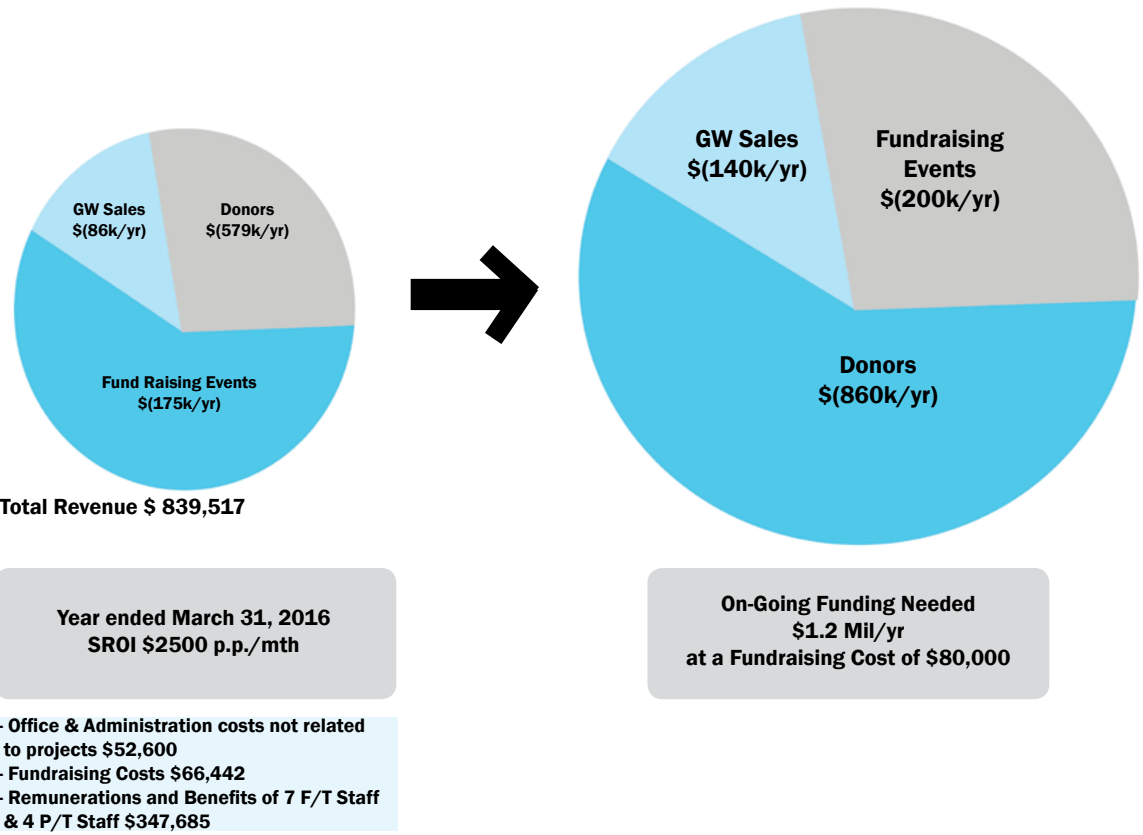
Financial instruments included in these financial statements include cash, term deposits, government remittances payable and accounts payable and accrued liabilities. All these financial instruments are recorded at their fair value. Any change between their fair value at the fiscal year end and the initially recorded cost is recorded as a gain or loss in the statement of operations.

Unless otherwise noted, it is management's opinion that the Foundation is not exposed to significant interest, currency or liquidity risks arising from these financial instruments, nor does it believe there are any significant concentrations of credit risk.

5. COMPARATIVE NUMBERS

The Foundation has changed the way in which it presents it's financial information in 2016. Accordingly, comparative numbers for 2015 have been restated.

SA Foundation  
Source of Funding





# HOW TO GET INVOLVED

## Volunteer Your Time

Below are some of the ways you can contribute your time and talents:

### Fundraising & Events

- Help with an existing fundraiser
- Organize & host a new fundraiser in your community
- Host a dinner
- Help secure sponsorship/auction items
- Ticket sales
- Gathering Volunteers
- Helping at events (set up, hosting, take down etc.)
- Help seek out grants and donations

### Global Wonders

- Sales (host handicraft booths, house/business/Facebook parties, etc.)
- Marketing (find stores, events, fair trade groups & other locations where we can sell/ display products)
- Business development
- Manual work (packaging, tagging, organizing, etc.)
- Design & product development (input)

### Other

- Development of the [Planned Giving](#) program
- Development of the [Monthly Donor](#) program
- Involve your [business](#)

### Community Education

- Organize public speaking engagements for SA Foundation
- Join the development of the Informer newsletter (SAF’s current news outlet)
- Research on sexual exploitation & trafficking
- Development of a library of information about sexual exploitation & trafficking

### Prayer Initiatives

- Join or initiate a prayer group/vigil
- Register with our Prayer Blog

# DONOR RECOGNITION

At the SA Foundation, we thank you, our generous donors, for believing in our young women involved in the many national and international SA projects that you are supporting. By financially partnering with the SA Foundation in providing them with the freedom and opportunities that we both enjoy, you not only bless them, but also bless the generations after them, as moms and children represent 70% of our intakes.

## THANK YOU FOR JOINING US IN THIS REWARDING WORK!

As a personal thank you to you, one of our moms is inviting you to enter into her joy as she shares her poem with us:



### BECAUSE I CARE

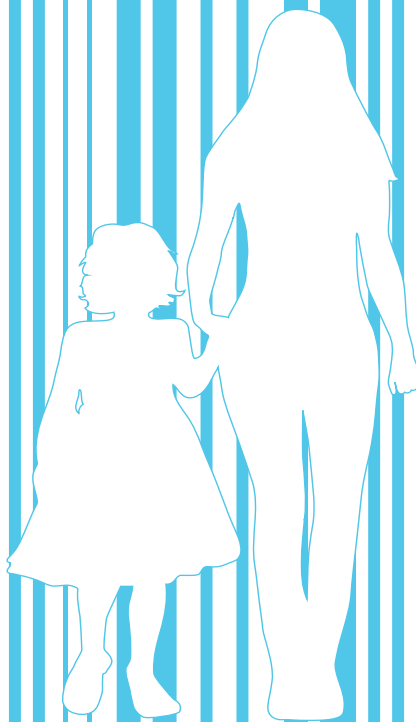
YOU WILL DEFY ME AS YOU DARE  
(ALTHOUGH GETTING AWAY WITH IT WILL DEFINITELY BE RARE)  
I ONLY DISCIPLINE YOU BECAUSE I CARE

I AM IN LOVE WITH YOU, YOUR HAPPY LITTLE SMILING FACE FIRST  
THING IN THE MORNING  
GOD’S GIFT OF YOU TO ME IS MOST GRACIOUS AND FAIR  
THE SAYING ‘THE APPLE DOESN’T FALL FAR FROM THE TREE’ —  
IN MY HEAD IS ALWAYS ROARING

RAISING YOU TO BE YOUR BEST, GROWING WITH YOU DURING  
LIFE’S LESSONS AND ONGOING TESTS  
LOVING YOU EVEN MORE EVEN WHEN YOU’RE PLAYING THE PEST  
I LOVE YOU WITH ALL MY ZEST

SOMETIMES I WILL SEEM UNFAIR  
YET I PROMISE THE CHOICES I MAKE IN REGARDS TO YOU ARE ONLY  
BECAUSE I CARE





SAFOUNDATION

**HEAD OFFICE**

PO Box 46013

Inglewood RPO 1233 9 Avenue SE

Calgary AB T2G 5H7

**BC REGIONAL OFFICE**

Box 683

142 - 757 W. Hastings Street

Vancouver BC V6C 1A1

P: (AB) 403-237-0921

P: (BC) 604-568-8994



[info@safoundation.com](mailto:info@safoundation.com)



[www.safoundation.com](http://www.safoundation.com)



[www.facebook.com/safoundation](https://www.facebook.com/safoundation)



[www.twitter.com/theSAF](https://www.twitter.com/theSAF)